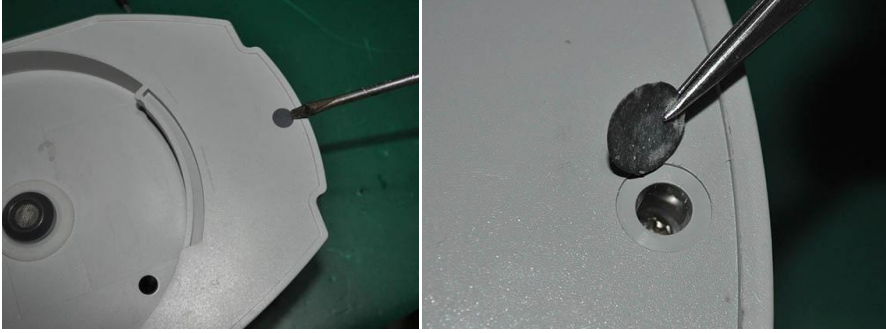
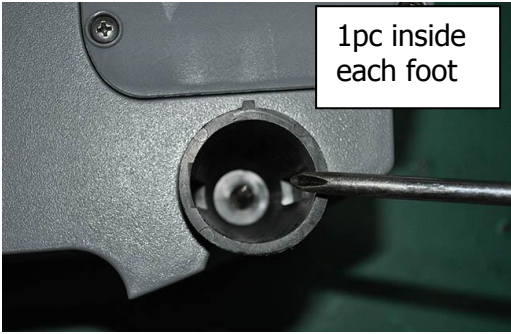


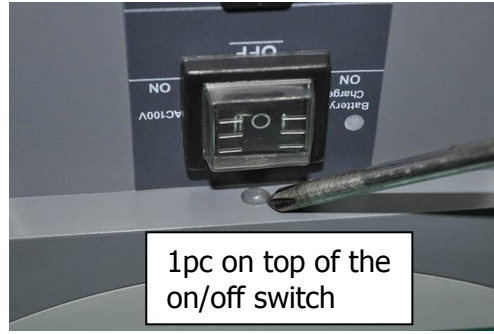
There are 8pcs of screws on the base to disassemble it



1pc inside the base upper cover which is covered by a dark grey PVC sticker



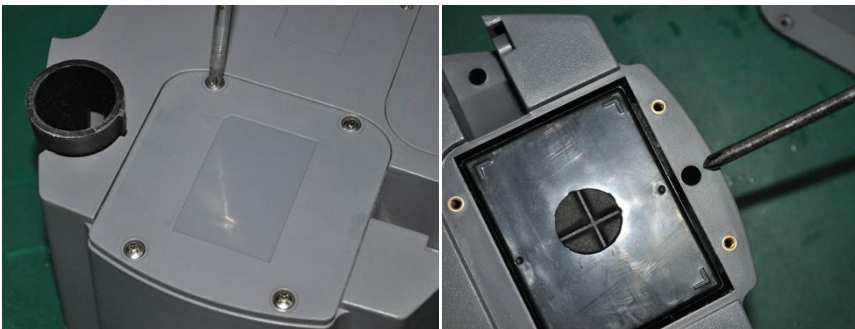
1pc inside each foot



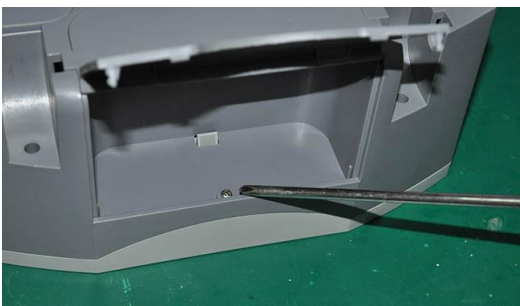
1pc on top of the on/off switch



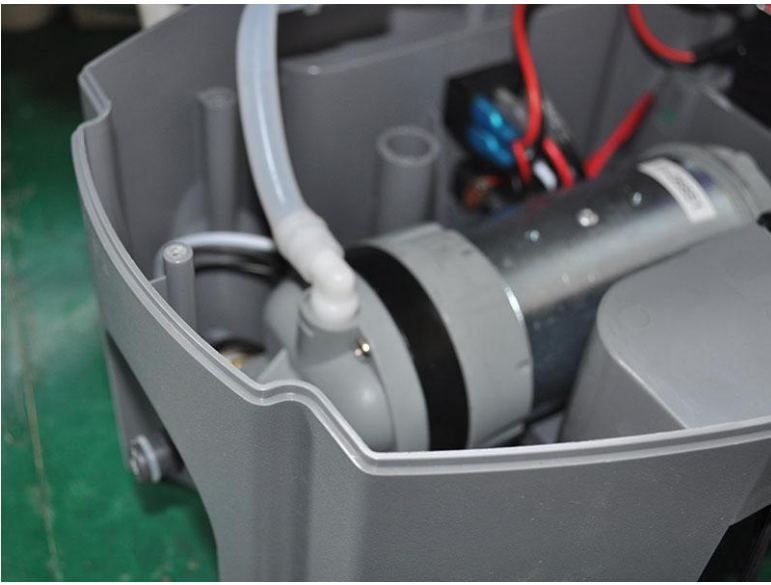
1pc inside each wheel



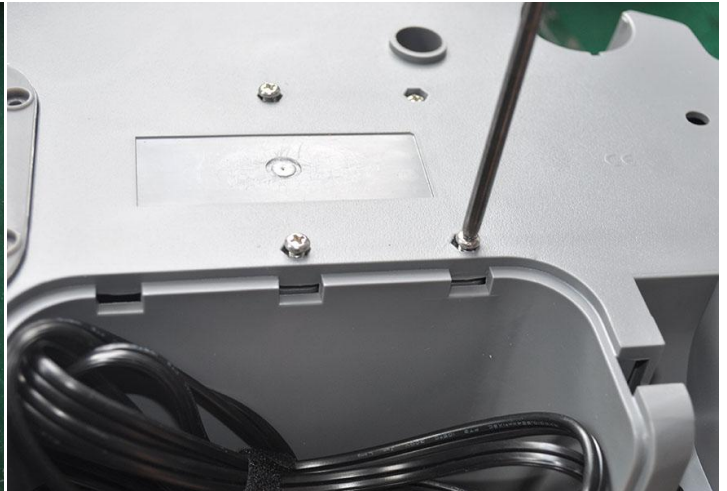
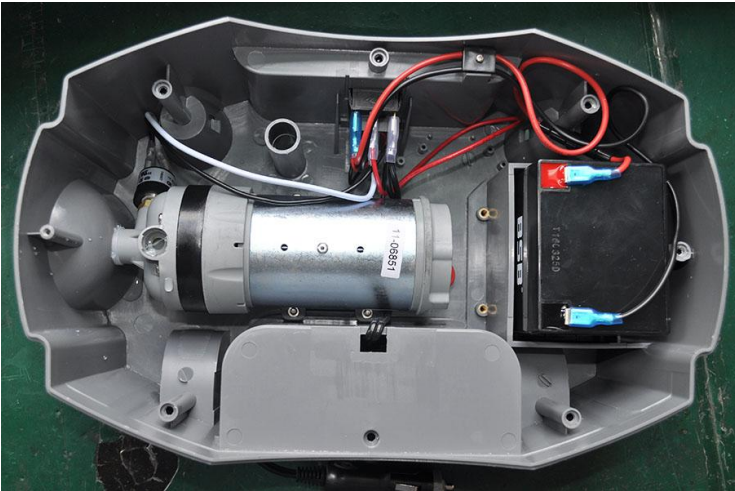
1pc inside the battery housing under the battery cover



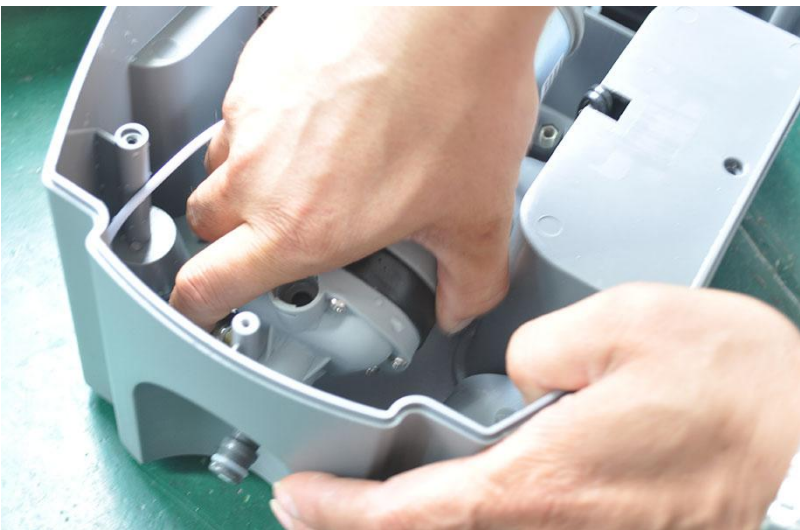
1pc inside the housing of 12V cigar lighter power cord



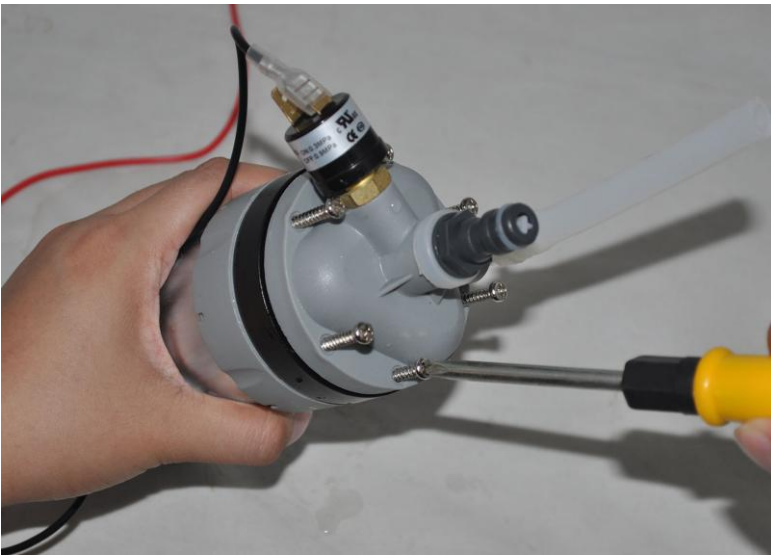
After open the upper cover, twist off the hose which is connected the pump



Unscrew the four screws on the bottom to release the pump from the housing



To take out the pump from the housing, disconnect the wire from pressure switch



Unscrew the pump cap, see the diaphragm seal in the middle



Replace the diaphragm seal and then assemble the pump cap back to the pump.